



Magnum Composite Doors

Make your perfect entrance



Door and glass colours shown in this brochure should be used for guidance only as the limitations in photographic and printing processes may mean that colours of products vary from those illustrated. All doors are provided with white internal skins, as standard, although Gold Oak and Rosewood are also available stained on both sides. Bespoke coloured doors can be painted on one or both sides.

All information in this publication is provided for guidance only and is given in good faith. Consort reserve the right to alter specifications without prior notice. Reproduction of this brochure in whole or part is strictly forbidden without prior written consent. All images are for illustration purposes only. V007.5.

Published by Consort 2022. Copyright © Distinction Doors 2022



DISTINCTION
DOORS



Contents

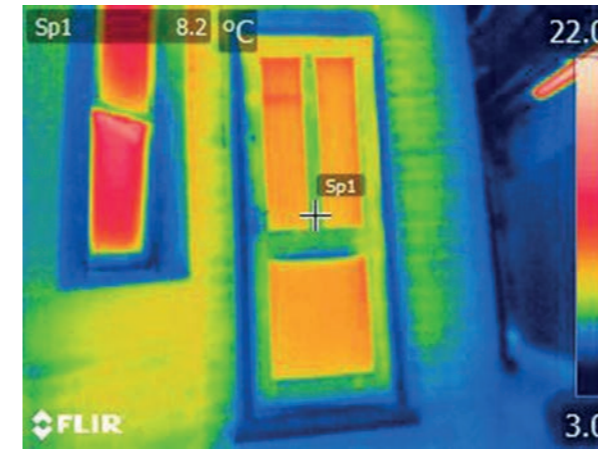
- 02 Benefits
- 03 Energy Efficiency
- 04 next-gen features
- 06 Magnum Door Index
- 08 Magnum Doors
- 20 Magnum Cottage Doors
- 26 Magnum 70mm Doors
- 28 Magnum Contemporary
- 34 Standard Colour Range
- 35 Bespoke Colour Range
- 36 Hardware
- 38 Glass Range
- 39 Sidelights
- 39 Mini-blind



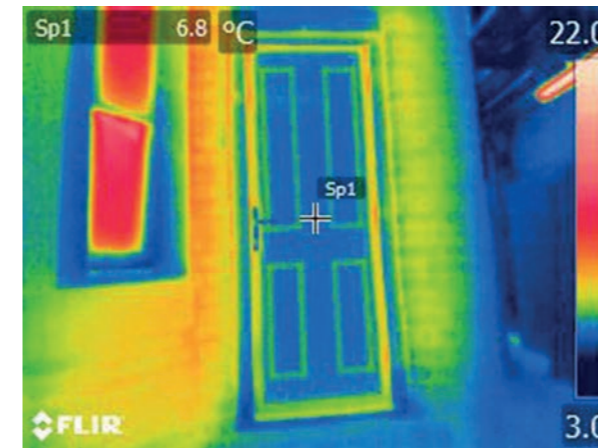
Benefits

- Standard glass – triple glazed 6.8mm laminated, toughened
- Standard 5 point locking system with hooks and roller cams
- Security handle set
- Anti-bump cylinder locks
- Unique fully adjustable 3D hinges rebated into the 44mm door for a discreet and perfect fit
- Triple sealed – giving double the weather protection of a standard flush door
- Impact-resistant thermoset GRP skin will not expand, contract or crack
- Maintenance free – just wipe clean and never needs painting

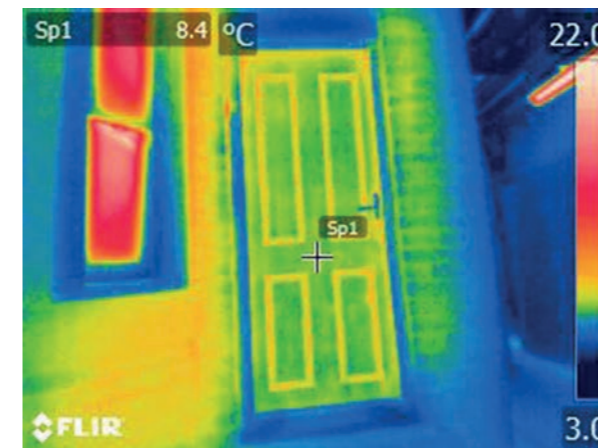
The best
welcome home!



Traditional timber panelled door



Consort GRP composite door



Solid timber core composite door

Energy Efficiency

A Consort GRP composite door is more energy efficient than a traditional timber door or a solid timber core composite door – fact!

These days, we all worry about how much energy our homes use. The rising cost of our energy bills and our impact on the environment mean we want to keep our consumption to a minimum. One of the best ways to do this is to choose thermally efficient products that keep warmth in and cold out, saving money and emissions.

When it comes to thermally efficient doors, our GRP composite door is the best choice you can make.

THE BEST
CHOICE
YOU CAN
MAKE

The photos show the thermal efficiency of each of the doors we tested. The darker the blue, the less heat is being lost. Reds and greens – the predominant colours on the timber door – indicate high heat loss.

For more information on individual door energy ratings just ask!

The ultimate in home security, combining the best in classic style and performance

Manufactured to the highest calibre and thoroughly tested to beyond industry standards, this energy efficient fibreglass composite door provides excellent thermal and sound insulation. Its strength comes from the construction of its sub-frame in solid, water-resistant polymer material, reinforced with Laminated Veneer Lumber (LVL). The depression moulded GRP skins, giving the authentic timber look, are then bonded to this sub-frame and its core filled with high density, 100% CFC-free polyurethane foam.

The fully reinforced, triple sealed outer frame, the multi-point security locking system and the unique adjustable hinges make the Consort Magnum a real heavyweight performer that retains an amazingly light, yet positive easy feel.

With a huge range of striking colours, two wood grain effects, plus of course brilliant white as standard, give your door that individual touch. Added to that is our wide and varied range of plain or decorative glazing options... the possibilities are endless.

What makes a nxt-gen door so special?



Security

Important in protecting your home from intruders. Your door has:

- Been manufactured in accordance to PAS 24 testing
- Enhanced security performance requirements for doorsets in the UK
- Secured by Design endorsement which is an official police initiative that improves the security of buildings and their immediate surroundings to provide safe places to live, work, shop and visit
- Impact resistant GRP with rigid polymer subframe
- High-density polyurethane foam core
- Document Q Approval (threshold dependant)
- Decorative glass triple glazed and 6.8mm laminated as standard
- Non decorative glass double glazed and 6.8mm laminated as standard
- Anti-Bump, Pick and Drill barrel
- High security handle and letterplate to achieve Secured by Design
- 3 Star Cylinder

If you require Secured by Design please specify at point of order.



Weatherproof

A must to keep the elements at bay! It must have:

- A waterproof door leaf
- A high performance, weather resistant, glazing system
- Weather performance, proven to BS6375 - 1
- Classification, for weather tightness, air, wind and water



Heat Insulation

Keeping your home insulated and your bills down. You require:

- A high performance insulating core
- High performance insulated glass units
- A door that exceeds Approved Document L of the Building Regulation requirements



Sound Insulation

Protecting you from external noise. It must have:

- Baffling against noise with a high performance insulating core
- At least Outdoor-Indoor Transmission Class (OITC): 26db
- At least Sound Transmission Class (STC): 29db



Durability

A door with pedigree - tried and tested for over 20 years. It needs:

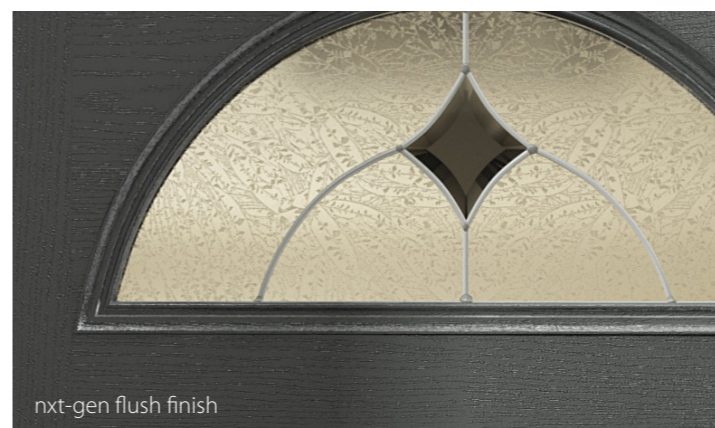
- Strength from its construction
- High impact resistant door skins
- Stability, whatever the weather conditions



Appearance

Your door must look good and be aesthetically pleasing. Think about:

- Door style
- Door colour
- Choice of decorative glass



Our Most Popular Door Styles

*nxt-gen optional

With a plethora of doors to choose from we're sure you'll find one you love. However, if you can't see the door you were looking for please ask for our entire range of styles.

| | | | | | | |
|-------------------|-----------------------------|-----------------------------|-----------------------------|-----------------------------|-----------------------------|-----------------------------|
| Magnum 01 | nxt-gen Magnum 02 | nxt-gen Magnum 03 | nxt-gen Magnum 07 | nxt-gen Magnum 08 | nxt-gen Magnum 10 | nxt-gen Magnum 14 |
| | | | | | | |
| Ask for more info | Page 8 | Page 10 | Page 14 | Page 15 | Page 18 | Page 9 |

| | | | | | | |
|-----------|-----------|-------------------|-----------|-----------|-------------------|-------------------|
| Magnum 04 | Magnum 05 | Magnum 06 | Magnum 09 | Magnum 11 | Magnum 12 | Magnum 13 |
| | | | | | | |
| Page 12 | Page 13 | Ask for more info | Page 16 | Page 20 | Ask for more info | Ask for more info |

| | | | | | | |
|-------------------|-----------|-----------|-------------------|-------------------|------------------------------------|------------------------------------|
| Magnum 15 | Magnum 16 | Magnum 17 | Magnum 18 | Magnum 23 | Magnum 24 Left, Centre or Right | Magnum 25 Left, Centre or Right |
| | | | | | | |
| Ask for more info | Page 22 | Page 24 | Ask for more info | Ask for more info | Page 31 | Page 32 |

| | | | | | | |
|------------------------------------|----------------------------|-----------|----------------------------|-------------------|-----------|-----------|
| Magnum 28 Left, Centre or Right | Magnum 30 Left or Right | Magnum 35 | Magnum 44 Left or Right | Magnum 48 | Magnum 49 | Magnum 50 |
| | | | | | | |
| Page 32 | Page 31 | Page 33 | Page 33 | Ask for more info | Page 23 | Page 21 |

| | | | | | | |
|-----------|------------------------------------|-----------|-----------|------------------------------------|-----------|----------------------------|
| Magnum 51 | Magnum 56 Left, Centre or Right | Magnum 57 | Magnum 58 | Magnum 59 Left, Centre or Right | Magnum 60 | Magnum 61 Left or Right |
| | | | | | | |
| Page 25 | Page 31 | Page 28 | Page 29 | Page 30 | Page 29 | Page 29 |

| |
|----------------------------|
| Magnum 62 Left or Right |
| |
| Page 30 |

Visit our online door designer to configure your perfect door.



Magnum 2



A traditional look that lets the design of decorative glass flow through from the lower to higher level, providing an attractive ensemble to the 6 panel Magnum 2 door.

Standard and Premium colours; Black, White, Blue, Green, Red, Distinction Chartwell and Distinction Anthracite Grey.

See the full bespoke colour range on Page 35!



Door colour: Distant Blue **Glass:** Aspen

See the full bespoke colour range on Page 35!

Magnum 14

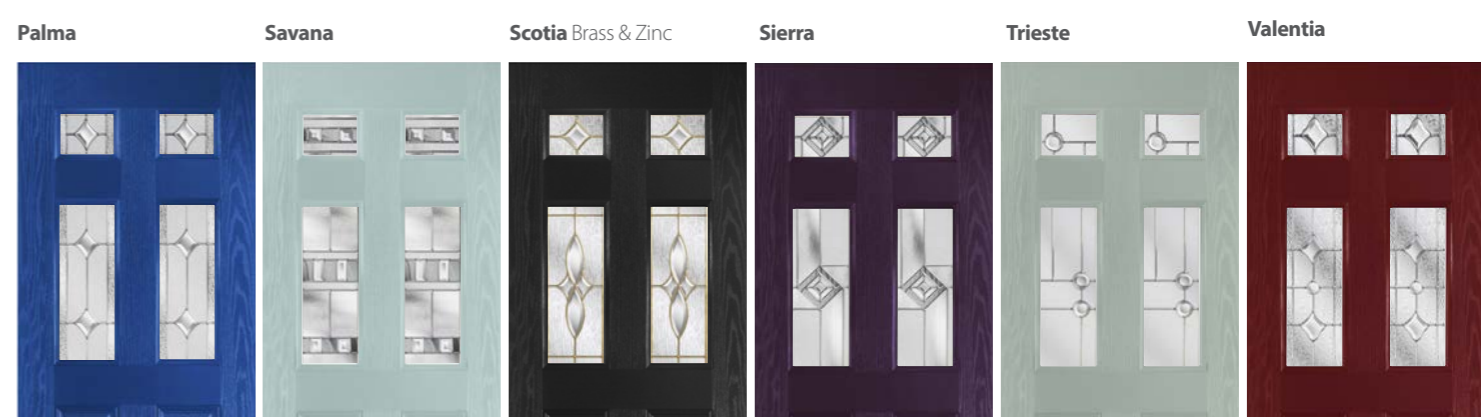
With more glass than the Magnum 2, the Magnum 14 still has all the classic elegance but with plenty of light.

Standard and Premium colours; Black, White, Blue, Green, Red, Distinction Chartwell and Distinction Anthracite Grey.

See the full bespoke colour range on Page 35!



Door colour: Traffic Red **Glass :** Andorra



Magnum 3



The classic four panel design of the Magnum 3 is one of our most popular styles, being suitable for many decorative glass designs.

Standard and Premium colours; Black, White, Blue, Green, Red, Distinction Chartwell and Distinction Anthracite Grey.

See the full bespoke colour range on Page 35!



Door Colour: Distinction Anthracite Grey **Glass:** Kara Brass

See the full bespoke colour range on Page 35!

Magnum 3

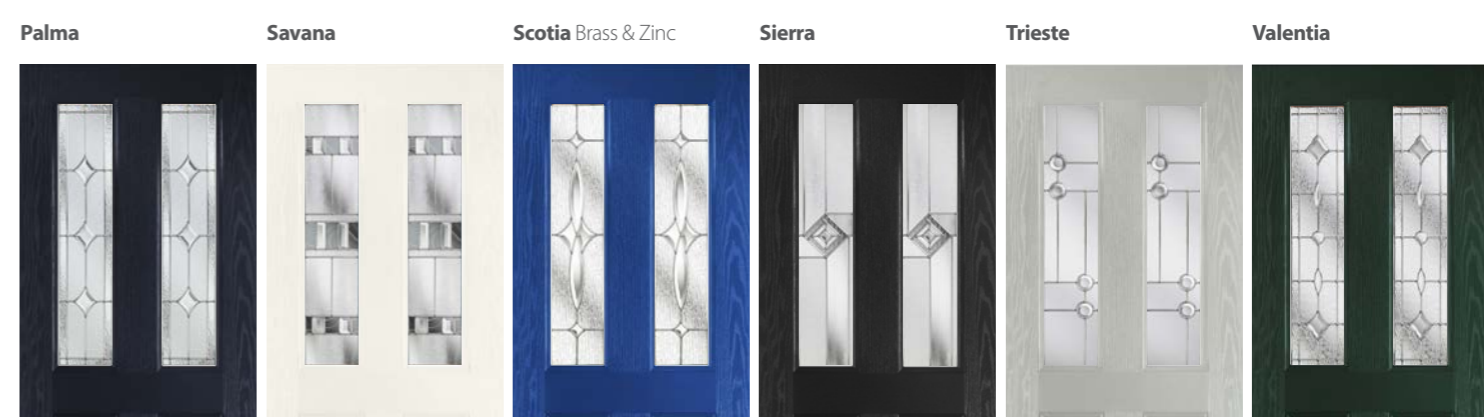
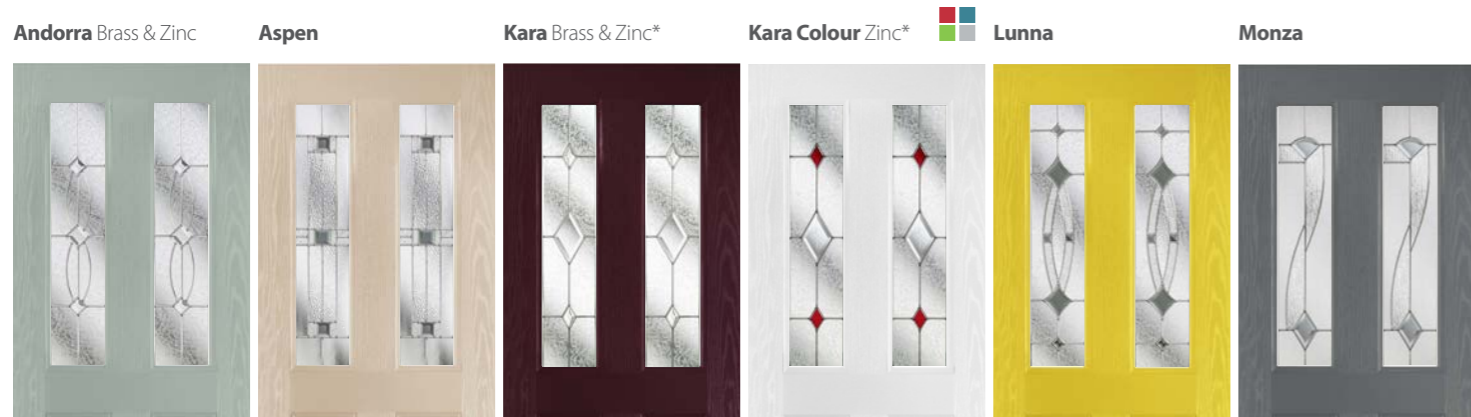
Team the Magnum 3 with Edwardian glazing for a truly classical look.

Standard and Premium colours; Black, White, Blue, Green, Red, Distinction Chartwell and Distinction Anthracite Grey.

See the full bespoke colour range on Page 35!



Door colour: White **Glass :** Edwardian



Magnum 4

The arch of the Magnum 4 offers a sophisticated twist to this classic design.

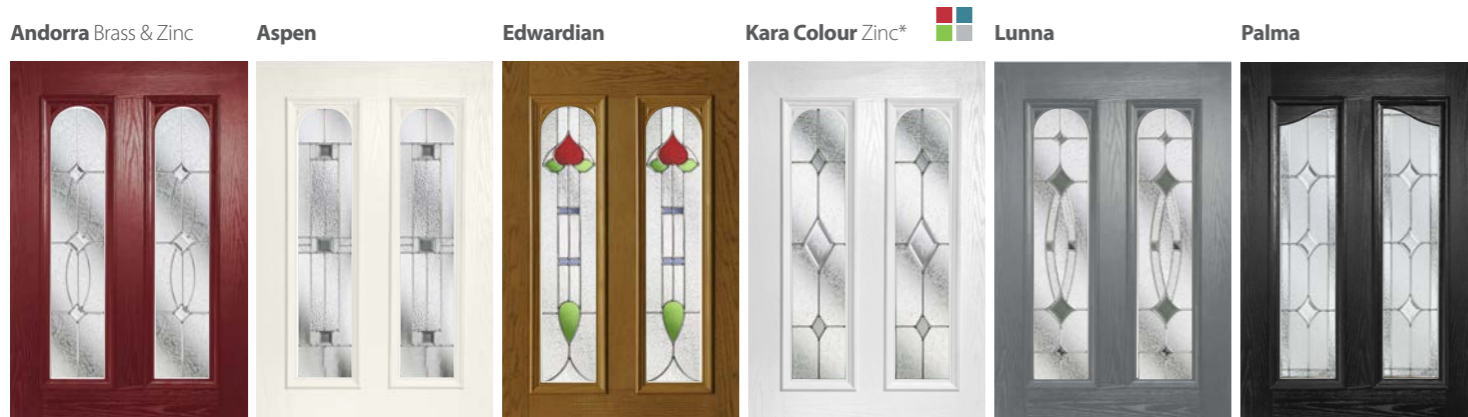
Standard and Premium colours; Black, White, Blue, Green, Red, Distinction Chartwell, Distinction Anthracite Grey, Gold Oak and Rosewood.

See the full bespoke colour range on Page 35!



Door colour: Black Glass : Monza

All the below glass designs can be used in the Magnum 3, 4 & 5!



Magnum 5

Magnum 5 offers yet another alternative to this signature design.

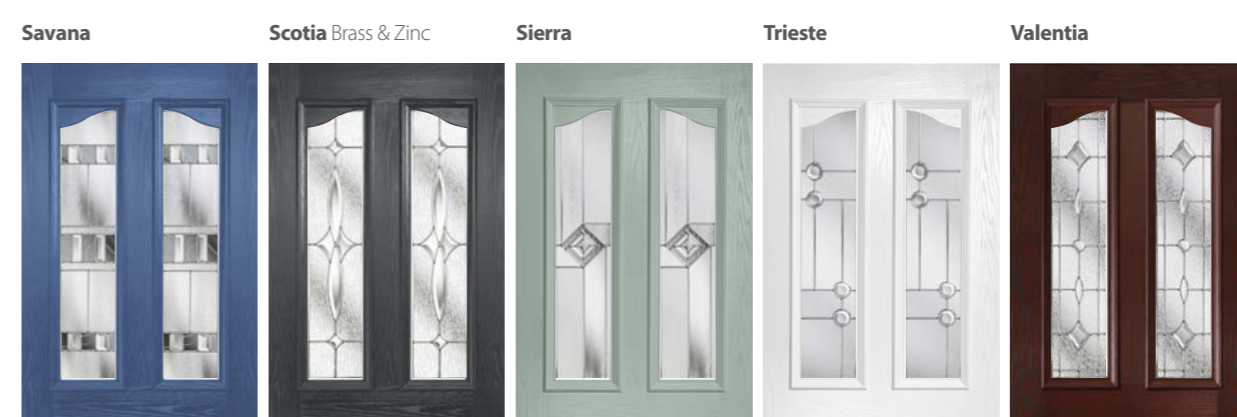
Standard and Premium colours; Black, White, Blue, Green, Red, Distinction Chartwell, Distinction Anthracite Grey, Gold Oak and Rosewood.

See the full bespoke colour range on Page 35!



Door colour: Red Glass : Kara Brass

All the below glass designs can be used in the Magnum 3, 4 & 5!



Magnum 7



The Magnum 7 gives the perfect balance of style and privacy for your home. A traditional design that is complemented by the decorative glass focal point.

Standard and Premium colours; Black, White, Blue, Green, Red, Distinction Chartwell and Distinction Anthracite Grey.

See the full bespoke colour range on Page 35!



Door colour: Distinction Cream White **Glass:** Andorra

See the full bespoke colour range on Page 35!

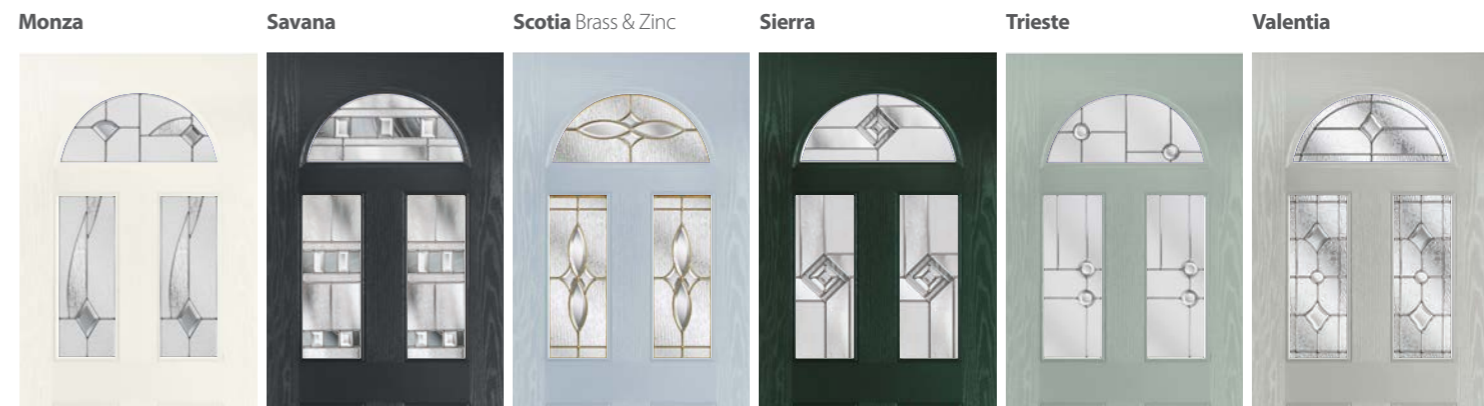
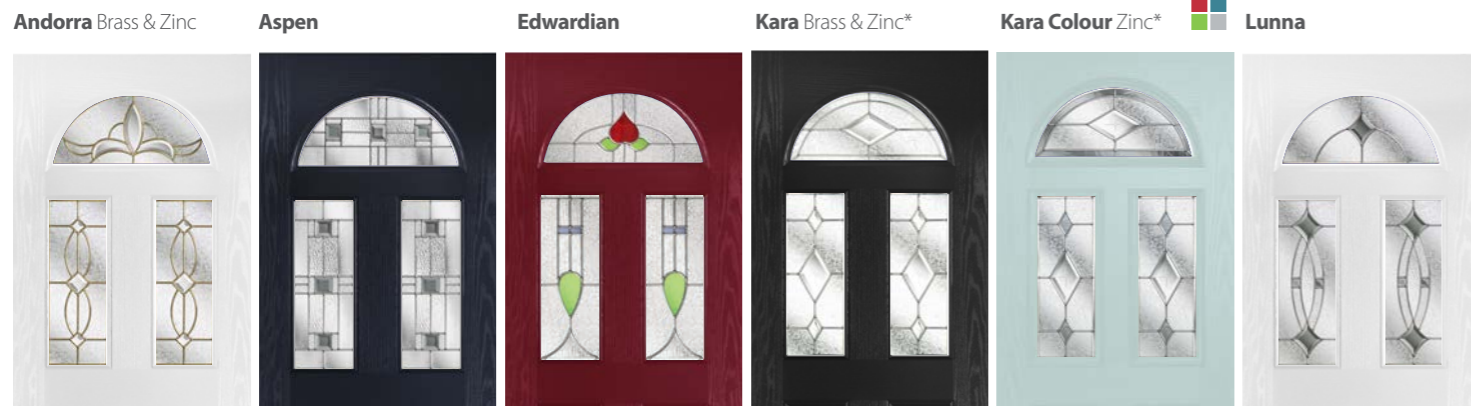
Magnum 8

The Magnum 8 lets in plenty of natural light and makes a feature of the stunning glass designs available.

Standard and Premium colours; Black, White, Blue, Green, Red, Distinction Chartwell and Distinction Anthracite Grey.



Door colour: Porcelain Blue **Glass:** Lunna



Magnum 9

The arch of the Magnum 4 offers a sophisticated twist to this classic design.

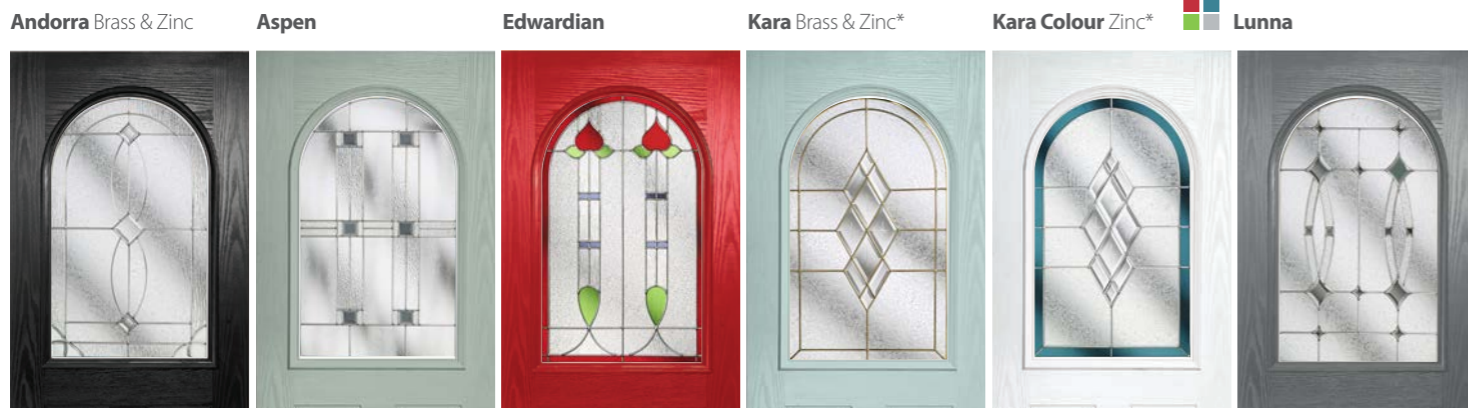
Standard and Premium colours; Black, White, Blue, Green, Red, Distinction Chartwell, Distinction Anthracite Grey, Gold Oak and Rosewood.

See the full bespoke colour range on Page 35!



Door colour: Distinction Buckingham Grey Glass : Palma

All the below glass designs can be used in the Magnum 3, 4 & 5!



Magnum 9

The vast glazing of the Magnum 9 makes a beautiful focal point.

Standard and Premium colours; Black, White, Blue, Green, Red, Distinction Chartwell, Distinction Anthracite Grey, Gold Oak and Rosewood.

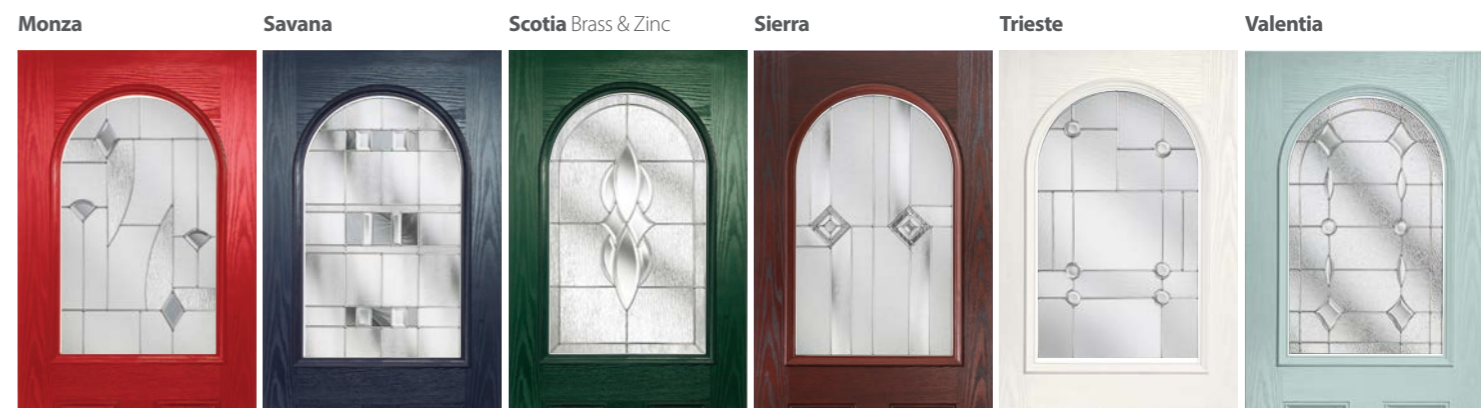


Door colour: Light Grey Glass : Monza

Magnum 13 Signature door available with Georgian cassette



All the below glass designs can be used in the Magnum 3, 4 & 5!



Magnum 10



Always popular, the Magnum 10 provides excellent light, with a large space for decorative glass to be displayed.

Standard and Premium colours; Black, White, Blue, Green, Red, Distinction Chartwell and Distinction Anthracite Grey.

See the full bespoke colour range on Page 35!



Door colour: Purple Violet **Glass:** Edwardian

See the full bespoke colour range on Page 35!

Magnum 10

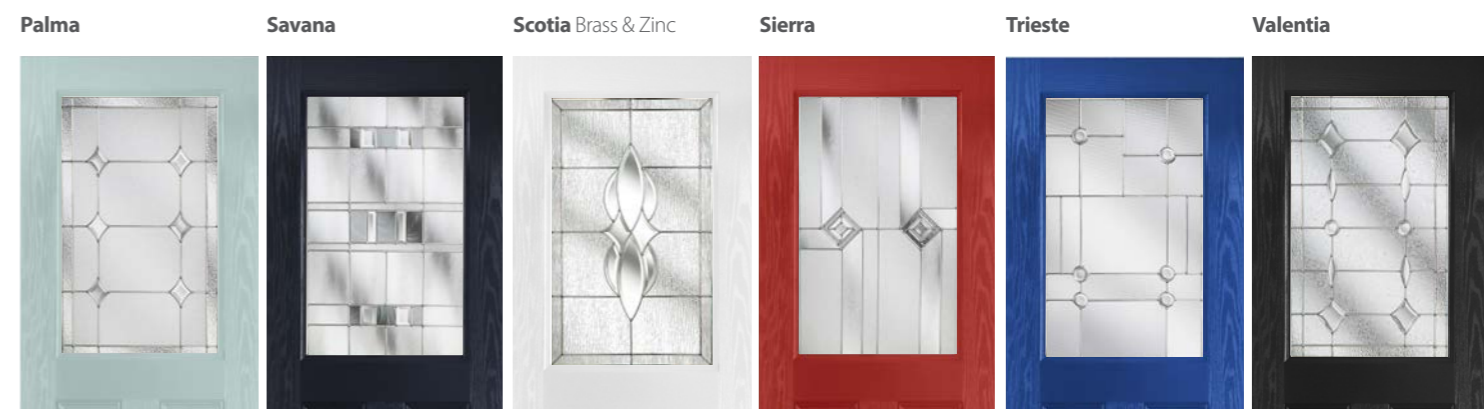
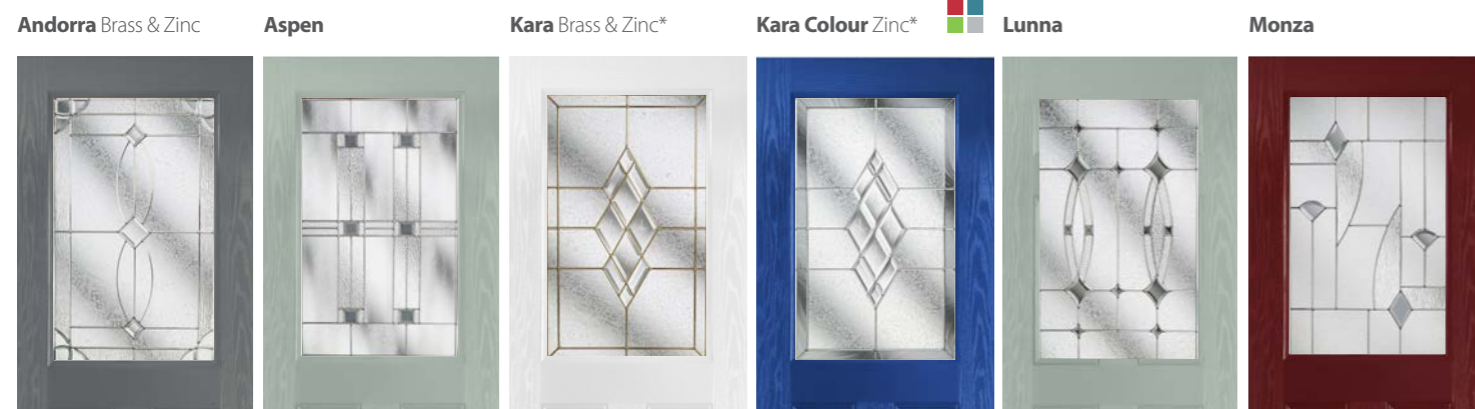
Also perfectly suited to a back door, the Magnum 10 can be teamed with the mini blind for optimum privacy.

Standard and Premium colours; Black, White, Blue, Green, Red, Distinction Chartwell and Distinction Anthracite Grey.

*Enclosed Mini-blinds
See Page 39!*



Door colour: Light Grey **Glass:** Mini-Blind



Magnum 11

The pretty diamond glazing panel of the Magnum 11 works perfectly with the cottage style planked design.

Standard and Premium colours; Black, White, Blue, Green, Red, Distinction Chartwell, Distinction Anthracite Grey, Gold Oak and Rosewood.

See the full bespoke colour range on Page 35!



Door colour: Distinction Chartwell Glass: Andorra

Magnum 50

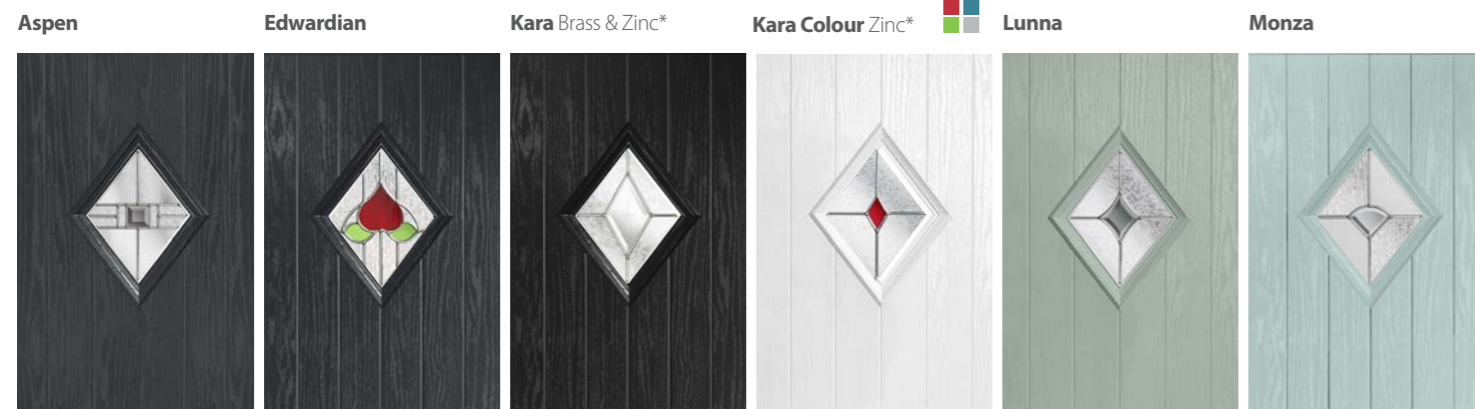
The Magnum 50 adds elegant diamond detailing to a classically finished door.

Standard and Premium colours; Black, White, Distinction Chartwell, Distinction Anthracite Grey, Gold Oak and Rosewood.

See the full bespoke colour range on Page 35!



Door colour: Distinction Anthracite Grey Glass: Andorra



Magnum 16

A charming, 'tongue and groove' planked effect cottage style door with a very traditional, centrally aligned window. Highly suitable for these patterned or decorative glazing options.

Standard and Premium colours; Black, White, Blue, Green, Red, Distinction Chartwell, Distinction Anthracite Grey, Gold Oak and Rosewood.

See the full bespoke colour range on Page 35!

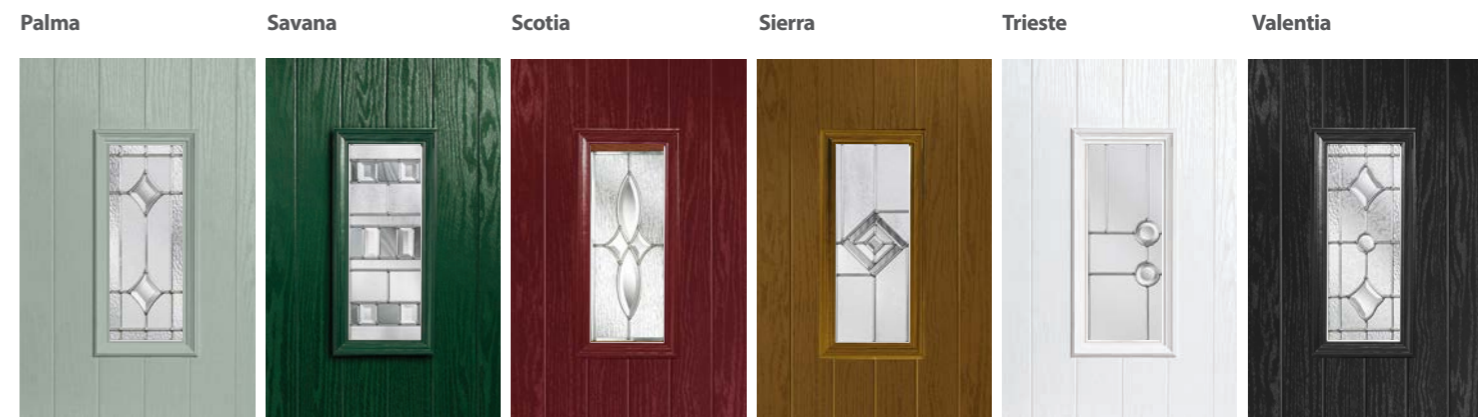
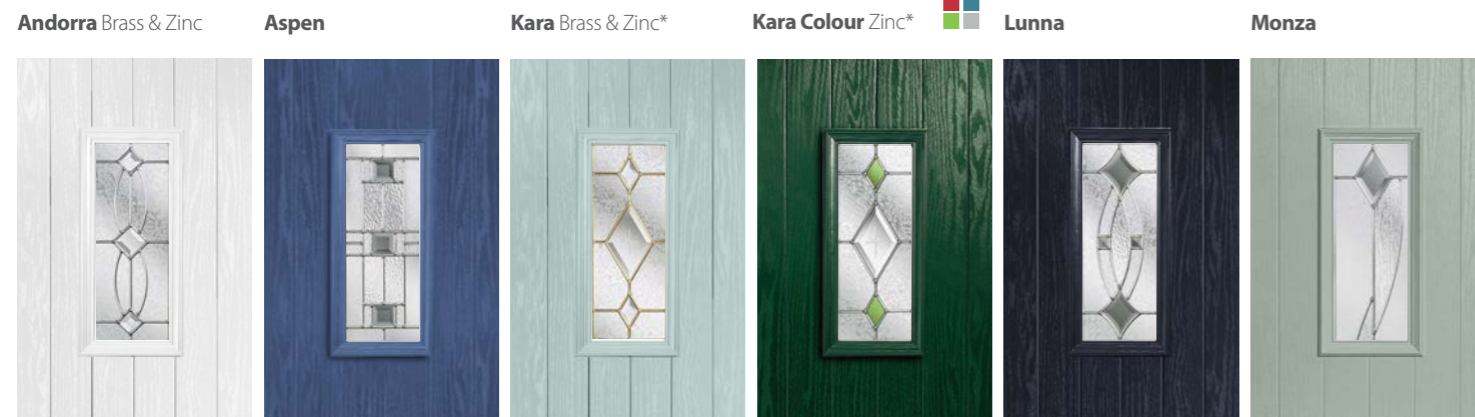


Magnum 49

For that extra heritage feel, choose the Magnum 49 with its traditional border to complete the look.

Standard and Premium colours; Black, White, Distinction Chartwell, Distinction Anthracite Grey, Gold Oak and Rosewood.

See the full bespoke colour range on Page 35!



Magnum 17

The smaller glazing panel of the Magnum 17 shows that sometimes less is more.

Standard and Premium colours; Black, White, Blue, Green, Red, Distinction Chartwell, Distinction Anthracite Grey, Gold Oak and Rosewood.

See the full bespoke colour range on Page 35!

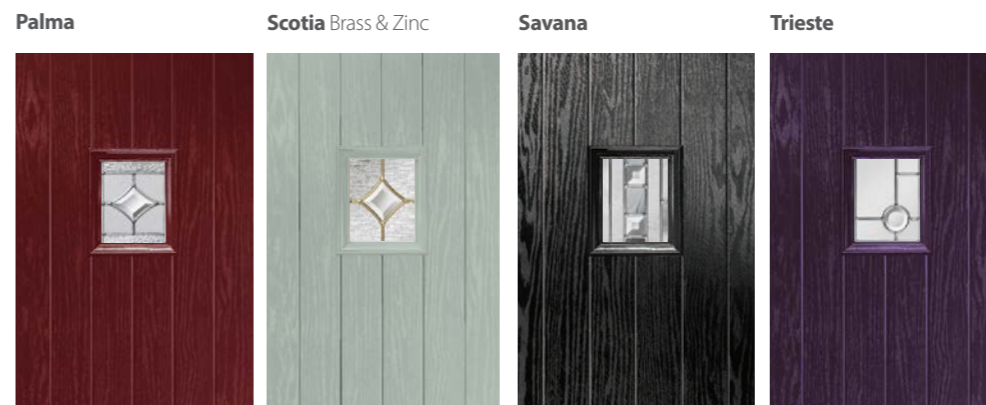


Magnum 51

The Magnum 51 adds elegant detail to a traditional finished door.

Standard and Premium colours; Black, White, Blue, Green, Red, Distinction Chartwell, Distinction Anthracite Grey, Gold Oak and Rosewood.

See the full bespoke colour range on Page 35!



70mm Doors



70mm Doors

Keep the heat in and the sound out with our elite range of 70mm doors. All the beauty and benefits of our standard doors, but over 50% thicker!

An impressive feeling of reassurance and quality.

Magnum 1-70



Magnum 2-70
Kara glazing



Magnum 3-70
Aspen glazing



Magnum 7-70
Aspen glazing



70mm doors are available with a choice of;

Aspen, Edwardian, Kara Clear (Brass or Zinc) and Monza glazing.

50mm triple glazed and laminated.

Available in White and Bespoke colours.

Magnum 8-70
Edwardian glazing



Magnum 9-70
Monza glazing



Magnum 10-70
Kara glazing



Magnum 14-70
Monza glazing



Magnum 23-70



Magnum 24C-70
Aspen glazing



Magnum 30L-70
Kara glazing



Magnum 39C-70
Aspen glazing



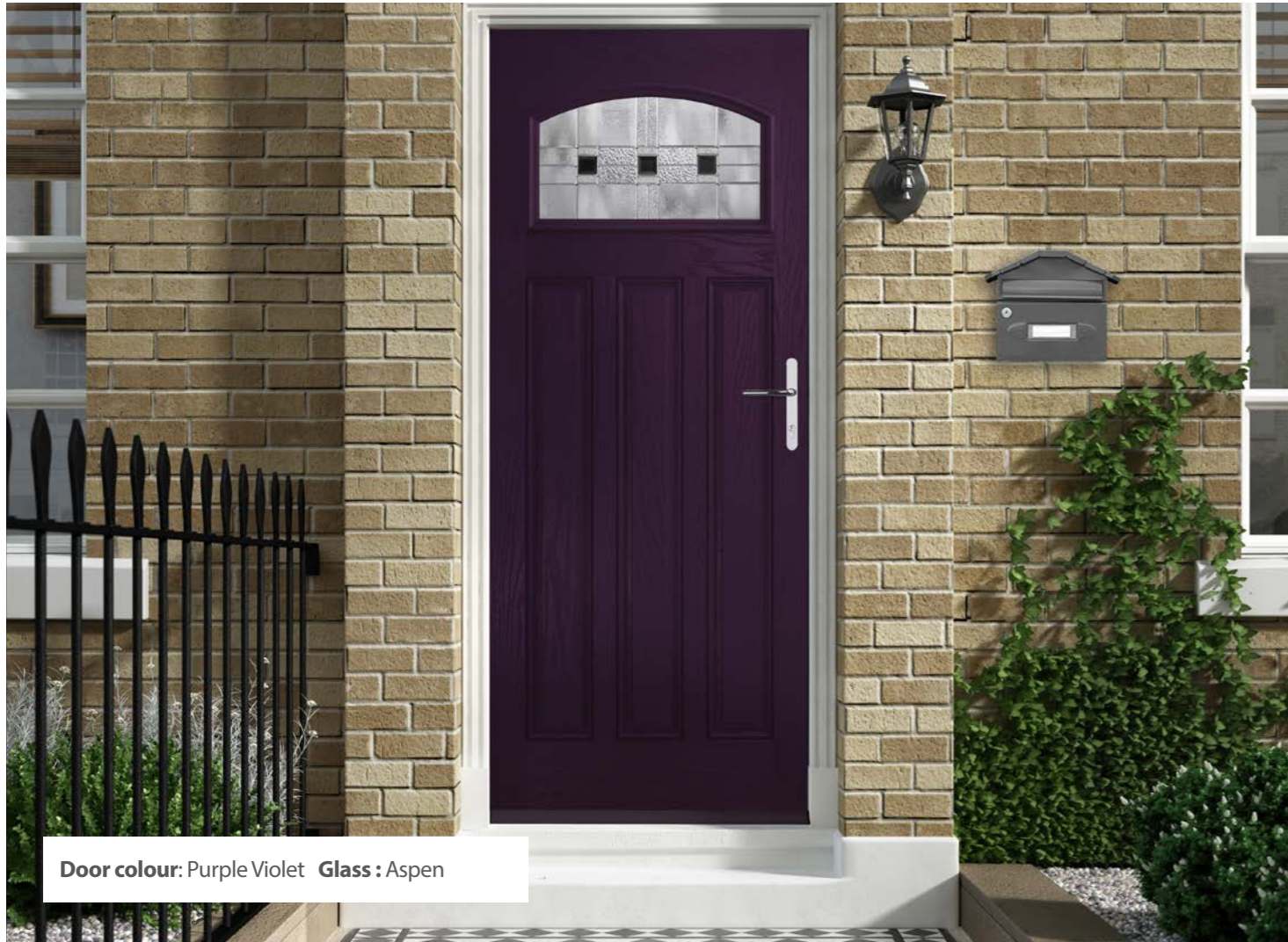
Magnum 41-70
Kara glazing



Magnum 46-70
Kara glazing



Magnum 57

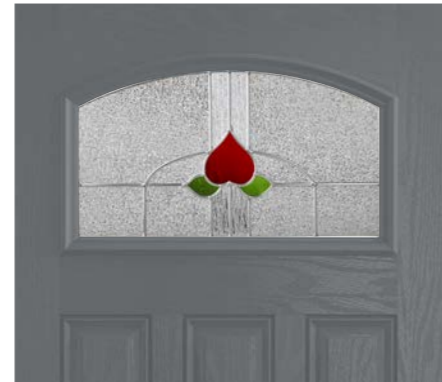


Door colour: Purple Violet Glass : Aspen

Aspen



Edwardian



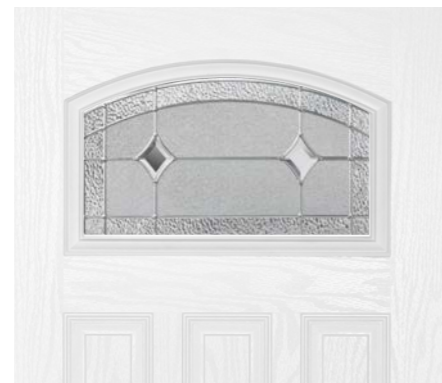
Kara Brass



Monza



Palma

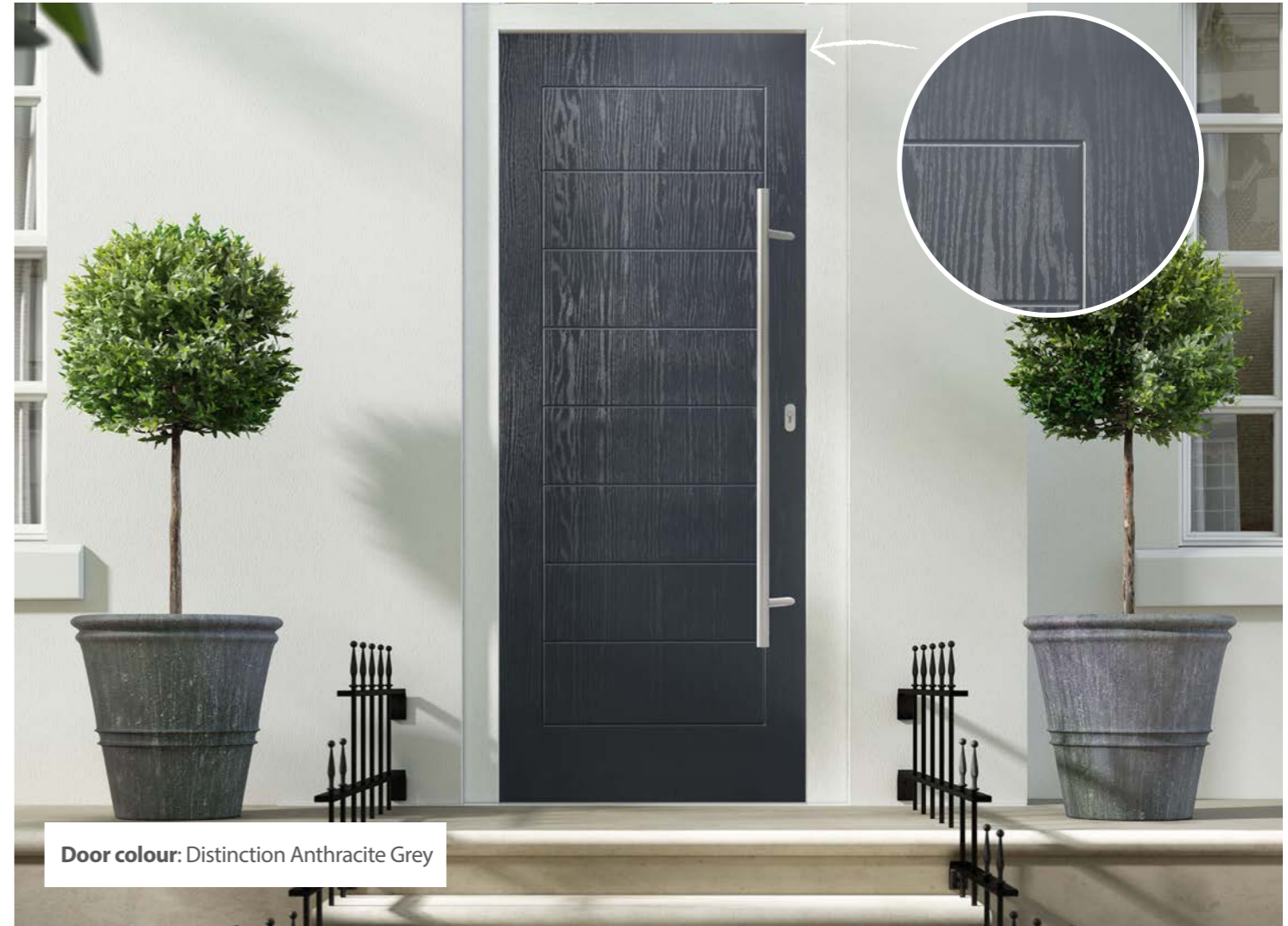


Our **NEW** Magnum 57 has all the benefits of a composite door without compromising on character!

Available in: white and bespoke colours only.

See the full bespoke colour range on Page 35!

Magnum 58, 60 & 61



Door colour: Distinction Anthracite Grey



Magnum 58



Magnum 60



Magnum 61

Our Infinity Collection adds a sophisticated twist to our contemporary door offering!

These eagerly anticipated additions to our already popular contemporary range include on-trend grooved door styles that are sure to make a statement on your home.

Available in: white and bespoke colours only.

See the full bespoke colour range on Page 35!

Magnum 59 & 62



Magnum 59R
Door Colour: Ruby Red Glass: Canvas



Magnum 59L
Canvas glazing



Magnum 59C
Radiant glazing

Magnum 24, 30 & 56



Magnum 24C
Odessa glazing



Magnum 24L
Bloom glazing



Magnum 56R
Door Colour: White Glass: Aspen

Classic planked design or flush design



Magnum 62R
Aspen glazing

Various designs available
See page 9 for more designs



Andorra
Zinc or Brass



Edwardian



Monza



Magnum 62R
Door Colour: Blue Glass: Sierra



Magnum 30L
Door Colour: Distinction Black Brown Glass: Breeze



Magnum 30R
Glacier glazing



Magnum 30L
Breeze glazing

Magnum 28 & 25



Magnum 28L
Door Colour: Leaf Green Glass: Canvas



Magnum 28C
Canvas glazing



Magnum 28R
Radiant glazing



Magnum 25R
Echo glazing



Magnum 25L
Cubic glazing



Magnum 25C
Door Colour: Colza Yellow Glass: Echo

Magnum 35 & 44



Magnum 35
Eclipse glazing



Magnum 35
Tidal glazing



Magnum 35
Door Colour: White Glass: Eclipse



Magnum 44C
Door Colour: Ultramarine Blue Glass: Nevis

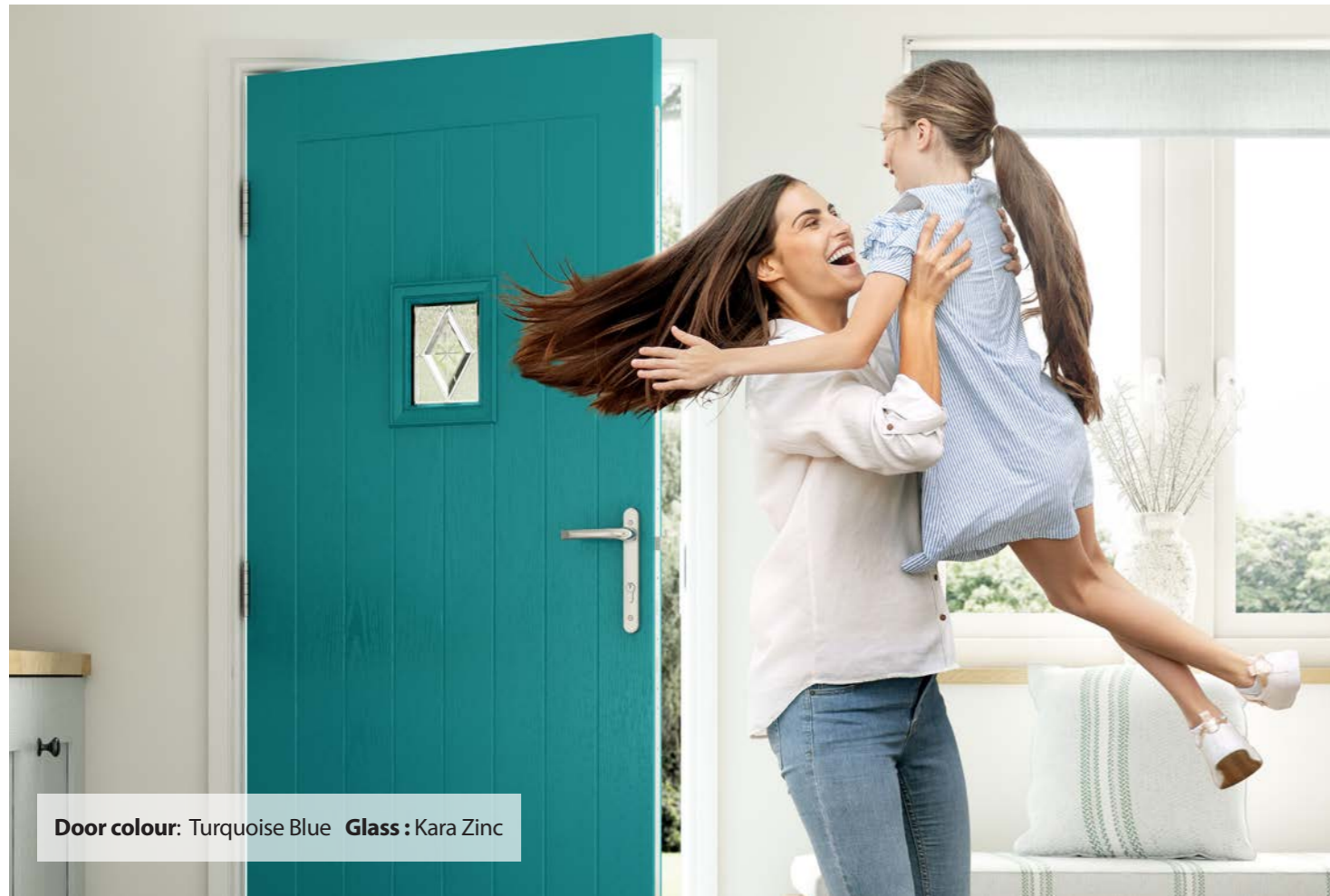


Magnum 44L
Matrix glazing



Magnum 44R
Nevis glazing

Colour Range

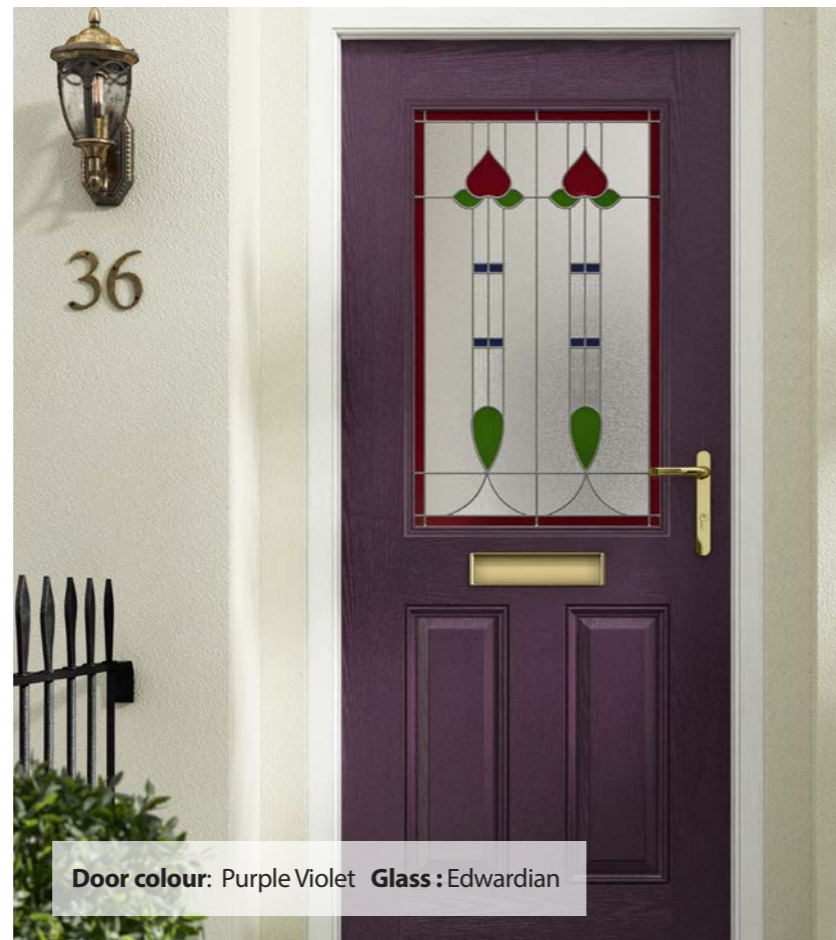


Door colour: Turquoise Blue **Glass:** Kara Zinc

Spoilt for choice, with our stunning range of colours.

Choose the perfect colour for the exterior of your home and match the interior with your décor for a seamless look and feel.

Our range of colours, styles and glass options will make your door truly unique and by ensuring that we perfectly match the colour, wood grain and moulding on the glazing cassettes, you can guarantee a flawless finish.



Door colour: Purple Violet **Glass:** Edwardian

Colours shown should be used for guidance only as the limitations in the printing process may mean that colours vary from those illustrated.

| | | | |
|--|--|-------------------------------|------------------------|
| | | | |
| Distinction Light Grey | Distinction Cream White | Honey Beige BS 08 B 17 | Colza Yellow RAL 1021 |
| | | | |
| Distinction Pebble Grey | Porcelain Blue BS 20 C 33 | Duck Egg BS 16 C 33 | Traffic Red RAL 3020 |
| | | | |
| Distinction Agate Grey | Distant Blue RAL 5023 | Turquoise Blue RAL 5018 | Ruby Red RAL 3003 |
| | | | |
| Distinction Grey | Ultramarine Blue RAL 5002 | Pale Green RAL 6021 | Telemagenta RAL 4010 |
| | | | |
| Distinction Buckingham Grey | Distinction Steel Blue | Leaf Green RAL 6002 | Purple Violet RAL 4007 |
| | | | |
| Distinction Basalt Grey | Distinction Slate Grey | Distinction Black Brown | Distinction Wine Red |
| <hr/> | | | |
| | | | |
| White | Black | Green | Red |
| | | | |
| Blue | Premium Distinction Anthracite Grey | Premium Distinction Chartwell | |
| | | | |
| Gold Oak * not available next-gen or Magnum 57 - 62 | Rosewood * not available next-gen or Magnum 57 - 62 | | |

* When ordering Gold Oak or Rosewood, the door and frame complement each other but won't match due to the door being a hand stain and the outer frame being a printed foil. Also single colours may vary slightly due to variations in gloss levels, again these will complement each other but will never be a true match. Please note; all doors are white on internal side as standard.

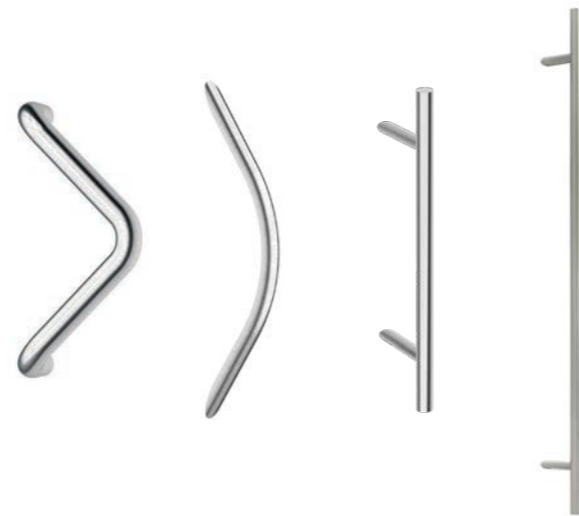
Hardware

Our stylish, high performance Lever/Lever and Lever Pad Door Handles are manufactured in 304 stainless steel, giving ultimate corrosion resistance. Superior quality and designed for product longevity. Suits beautifully with our other stainless steel furniture for a totally coordinated approach.



The stunning stainless steel handles compliment our other products in the stainless steel range.

Offering a range of upmarket, contemporary handles manufactured in 316 stainless steel and delivering outstanding product performance.



The stylish stainless steel fixed Knob Suites & Escutcheons fit perfectly with other products in our range. They are manufactured in high grade stainless steel, giving excellent corrosion resistance. Only available in brushed stainless steel.



Our Door Knockers have been sensitively designed to complement the features of any external door face. The products coordinate perfectly with our other stainless steel door hardware for a fully coordinated approach and improved aesthetics. Manufactured from 304 stainless steel, the products offer ultimate corrosion resistance for ultimate performance.

Available in contemporary and traditional styles and with or without a spy hole.



44mm door fitted with the 3D hinge, a heavy duty adjustable door hinge developed for long life performance. Featuring low friction bearings for a smooth door opening, it offers reliable maintenance free operation. Also available in Gold and White.



70mm door fitted with the SFS hinge, available in a variety of colours.



A front door is a focal point of most properties and the hardware should reflect this.

The stainless steel letterplate has been designed very much with aesthetics in mind with its simple but elegant styling, designed to complement any door and suited finishes with our other door furniture.

Also available in Black, White, Chrome and Gold.



Standard Multipoint Locking System - 5 point locking with hooks and roller cams which can achieve Secured by Design with Lever/Lever and Lever/Pad.

Not available with T Bar or Central Knob.

Automatic secure 3 point slam lock for contemporary T Bar handle and Central Knob.

Can be specified with all doors as an optional extra.

Doors with the slam lock will have a thumb turn locking cylinder as standard.



Weather (Drip) Bars can be supplied in Silver and Gold finishes as well as colour coded to match the door slab/leaf.

New Collection

Sparkling glass

The ultimate finishing touch for your door...

- ✓ 12 stunning styles of glazing
- ✓ Triple glazed
- ✓ The encapsulated decorative pane means the design stays looking beautiful for longer
- ✓ Easy to maintain, no bevels or comes to clean
- ✓ 6.8mm Laminated glass for extra security



Andorra Brass or Zinc
Nearest backing glass: N/A



Aspen
Nearest backing glass: Minster



Edwardian
Nearest backing glass: Cotswold



Kara Brass, Zinc or Zinc colours
Nearest backing glass: N/A



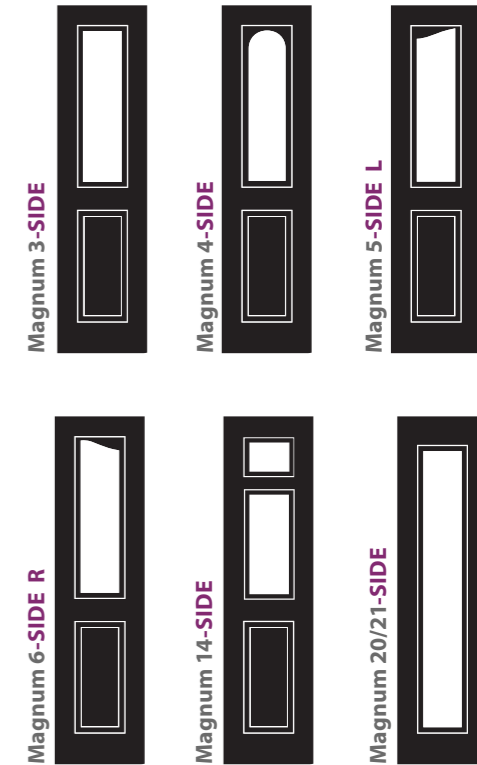
Door colour: White Glass : Palma

Sidelights

Adding sidelights to your door gives a stylish extra dimension to truly make a statement.

Not only do they look so impressive by extending the glazed area across the entrance to your home, sidelights also allow for more natural light to fill your internal living space.

Please note: not available with nxt-gen.



Lunna
Nearest backing glass: N/A



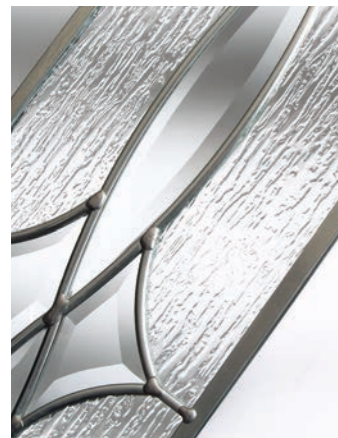
Monza
Nearest backing glass: Stippolyte/Cotswold



Palma
Nearest backing glass: Stippolyte



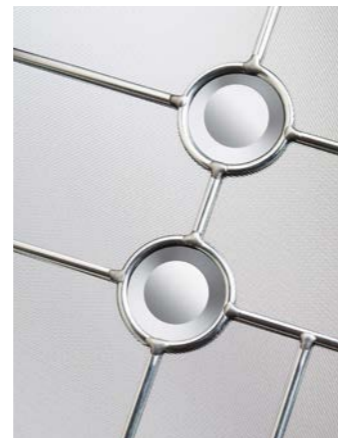
Savana
Nearest backing glass: N/A



Scotia Brass or Zinc
Nearest backing glass: Cotswold



Sierra
Nearest backing glass: Mistlite



Trieste
Nearest backing glass: Mistlite



Valentia
Nearest backing glass: Minster

Please Note: Glass bevels are clear and can be seen through.

Mini-blind

An enclosed mini-blind is the perfect solution for controlling light and privacy in your home.

Mini-blinds can be handed left or right and have a simple control mechanism to be raised or tilted with one hand. This system uses a magnetic tab rather than a traditional cord, so is completely safe for use around children.

The mini-blind is enclosed within two panes of glass in the frame so never require painting and are protected from damage and dust. They are a stylish finishing touch to any external door.

Only available in White.



Door colour: Light Grey Glass : Mini-blind



Perfect when added security is essential.

Available with Magnum 10, 34 and 43 doors.